



## GFM500/2Volt 500Ah

### General Series Battery

2V series is a general purpose battery with 20 years design life in float service. With heavy duty grids, thicker plates, special additives and updated AGM valve regulated technology, the RL series battery provides consistent performance and long service life. The new grid design effectively reduces the internal resistance, which provides higher specific energy density and excellent high rate discharge characteristics.

### Application

- ☆Emergency Power System
- ☆Communication equipment
- ☆Telecommunication systems
- ☆Uninterruptible power supplies
- ☆Electric toy car and wheelchairs, etc
- ☆Power tools
- ☆Alarm system
- ☆Marine equipment
- ☆Medical equipment
- ☆Fire and Security System

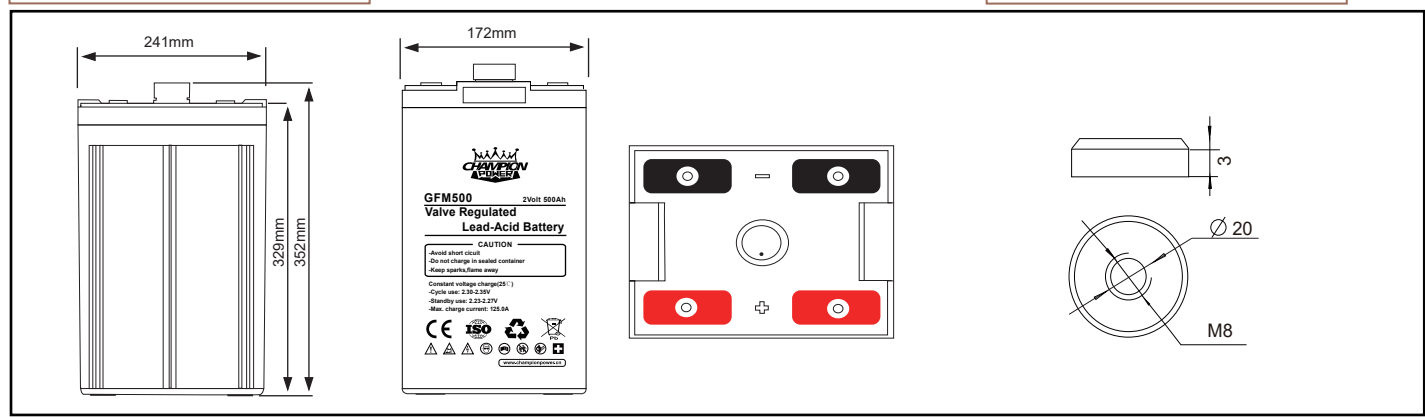


### Specification

Battery Model	Nominal Voltage	2V			
	Rated capacity (10Hour rate)	500Ah			
Dimension	Length	Width	Height	Total Height	
	241mm	172mm	330mm	356mm	
Approx Weight	27.00Kg				
Internal Resistance	Full charged at 25°C (77°F): Approx 0.50mΩ				
Max.discharge current	3000A(5s)				
Floating design life @ 25°C (77°F)	20 years				
Capacity @ 25°C (77°F)	C <sub>20</sub> (26.75A/1.85V)	C <sub>24</sub> (22.92A/1.85V)	C <sub>48</sub> (12.50A/1.85V)	C <sub>72</sub> (8.68A/1.85V)	
	535Ah	550Ah	600Ah	625Ah	
Capacity affected by Temp(10 HR)	40°C (104°F)	25°C (77°F)	0°C (32°F)	-15°C (5°F)	
	102%	100%	85%	65%	
Self Discharge @ 25°C (77°F)	After 3 months storage		After 6 months storage		After 12 months storage
	91%		82%		64%
Charge method @ 25°C (77°F)	Cycle Use		2.30-2.35V (Initial charging current less than 125.0A)		
	Float Use		2.23-2.27V		

### Outer dimension (mm)

### Terminal Type (mm)



### Constant Current(Amp) and Constant Power(Watt) Discharge Table at 25°C (77°F)

F.V / TIME		5min	10min	15min	30min	1h	2h	3h	4h	5h	8h	10h
1.60V	A	1550.00	1175.00	875.00	575.00	300.00	175.00	130.00	103.33	87.71	57.92	55.00
	W	2738.33	2079.75	1560.42	1035.00	545.00	317.92	238.33	189.44	160.80	107.15	101.75
1.70V	A	1350.00	1104.17	804.17	545.83	310.00	167.92	127.50	100.00	86.04	57.00	52.50
	W	2452.50	2042.71	1494.41	1023.44	581.25	316.24	240.13	189.17	162.76	107.83	99.31
1.75V	A	1530.21	1055.00	750.00	529.17	300.00	164.58	125.00	95.00	85.00	56.25	51.50
	W	2805.38	1978.13	1412.50	1005.41	570.00	314.08	238.54	182.08	162.92	107.81	98.71
1.80V	A	1393.33	1008.33	700.00	505.00	290.00	160.42	122.50	93.33	81.25	54.79	50.00
	W	2554.44	1915.83	1335.83	972.13	558.25	308.80	236.83	181.22	157.76	106.39	97.08
1.85V	A	1205.00	950.00	650.00	470.00	275.00	156.25	117.50	91.67	77.71	53.33	48.75
	W	2269.42	1828.75	1256.67	916.50	536.25	304.69	230.10	180.28	152.83	104.89	95.88

Note: The above datas are average values. (Edition 2017-11)



## GFM500/2Volt 500Ah

